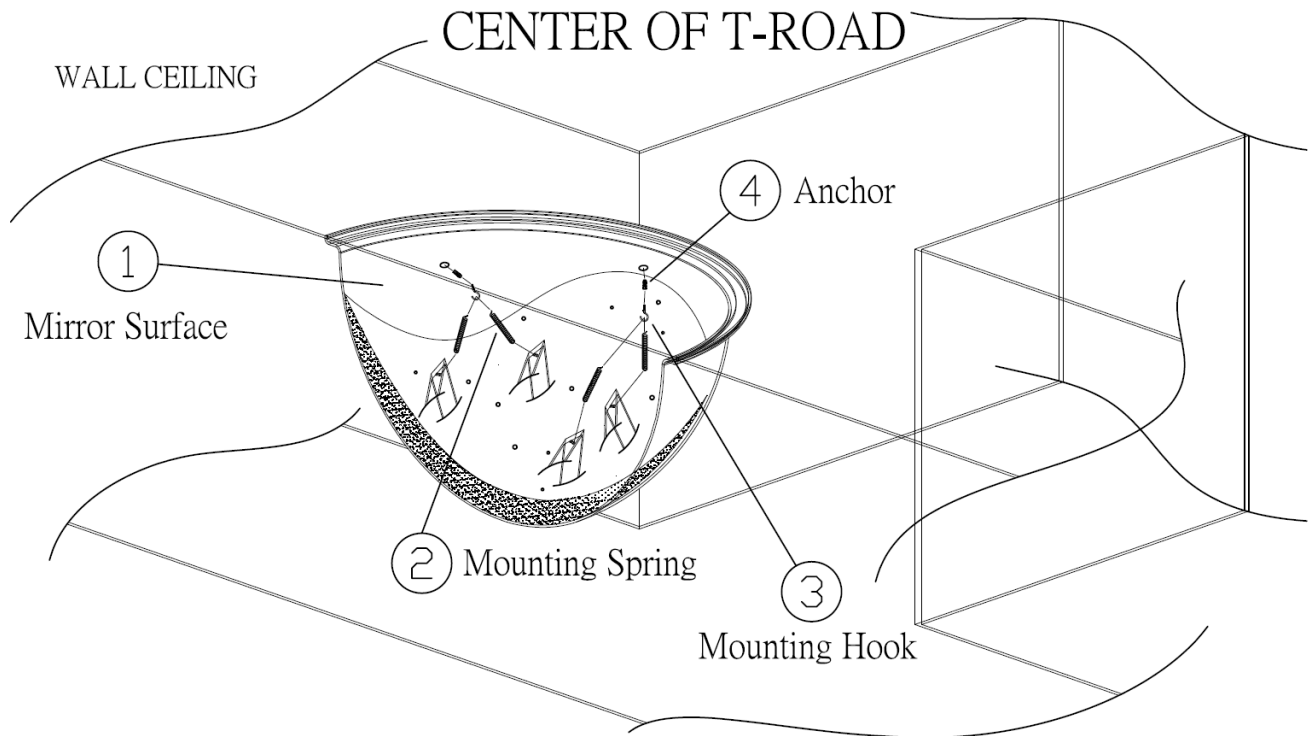


HALF DOME MIRROR (ADH-66)

- WALL MOUNT
- ACRYLIC MIRROR PROVIDES EXTRA CLEAR IMAGES
- 180° ANGLE FOR LEFT & RIGHT VIEWING
- SOLID & LIGHT MIRROR FOR EASY INSTALLATION
- SUITABLE FOR CONVENIENT STORE, WAREHOUSE, HOSPITAL T-INTERSECTION USE



ITEM NO : ADH-66 (26 inches)
DESCRIPTION : 180° DOME MIRROR (Half)
MIRROR SIZE : 660mm (26 inches)
CONVEX RADIUS : 180°
MIRROR MATERIAL : R225
BACKBOARD MATERIAL : ACRYLIC
WEIGHT : 1.7 kg



P.N.	DESCRIPTION	SPECIFICATIONS	UNIT	Q'TY	REMARK
1	Mirror Surface	Acrylic	Piece	1	half-sphere mirror with clear & waveless surface
2	Mounting Spring	M10	Set	4	(1) Mirror Surface & (3) Mounting Screw assembly use
3	Mounting Screw	Galvanized steel	Set	4	
4	Anchor	Plastic 1/4" x 1"L	Set	4	(3) Mounting Screw & solid surface mounting use